



# BlueView<sup>®</sup>

TECHNOLOGIES

## P-Series Sonar User Handbook



Part Number: 202914-01

Revision: A

September 2010

©BlueView Technologies, Inc. All rights reserved.

All product names are trademarks of their respective companies.

## Table of Content

<b>Chapter 1</b>	<b>Welcome.....</b>	<b>4</b>
	About the BlueView Sonar .....	4
<b>Chapter 2</b>	<b>System Contents.....</b>	<b>5</b>
<b>Chapter 3</b>	<b>Understanding Imaging Sonar.....</b>	<b>6</b>
	What is Imaging Sonar? .....	6
	How do I interpret the Sonar images? .....	6
<b>Chapter 4</b>	<b>Sonar System Installation .....</b>	<b>7</b>
	Install Software on your PC.....	7
	Set your PC's network card IP address .....	8
	Assemble System .....	9
	Required Cables: .....	9
	Firewall Configuration .....	10
<b>Chapter 5</b>	<b>Sonar Installation.....</b>	<b>11</b>
	Mount the Sonar.....	11
	Mounting Method.....	11
	Mounting Location .....	11
	Sonar Up-Down Orientation .....	11
	Sonar Angle.....	12
<b>Chapter 6</b>	<b>Sonar Operation .....</b>	<b>15</b>
	Connect to the Sonar .....	15
	Dual Frequency Sonars .....	15
	Shutdown .....	16
	Maintenance .....	16
<b>Chapter 7</b>	<b>Troubleshooting .....</b>	<b>17</b>
	If the ProViewer Software cannot see the sonar head: .....	17
	If the image updates seem slow: .....	19
<b>Appendix A:</b>	<b>Technical Specifications.....</b>	<b>20</b>

**BlueView Technologies has made every effort to ensure the accuracy and completeness of this document; however, because ongoing development efforts are made to continually improve the capabilities of our products, we cannot guarantee the accuracy of the contents of this document. We disclaim liability for errors, omissions, or future changes herein.**

**Copyright © 2003-2010 BlueView Technologies Corp. All rights reserved. No part of this publication may be copied, reproduced, or translated, without the prior written consent of BlueView Technologies. No part of this publication may be stored or transmitted in any electronic form without the prior consent of BlueView Technologies. Any unauthorized use is a violation of copyright laws.**

**Warning! This device should not be used as a navigational aid to prevent collision, grounding, boat damage, or personal injury.**

**Warning! This product contains lead, a chemical known to the state of California to cause cancer, birth defects and other reproductive harm. Handling and/or opening this unit may result in exposure to lead, in the form of solder.**

**Warning! Disassembly and repair of this electronic unit should only be performed by authorized service personnel. Any modification of the serial number or attempt to repair the original equipment or accessories by unauthorized individuals will void the warranty.**

**Warning! Changes or modifications to this unit not expressly approved by the party responsible for compliance may void the user's authority to operate this equipment.**

**Warning! This equipment contains High Voltage electronics. Tampering with or using damaged equipment could lead to serious injury.**

**Warranty Information:**

**The sonar is backed by a standard 12-month parts and labor warranty policy.**

**For more information on safety and/or maintenance issues please call BlueView Technologies at 206.545.7260.**

# Chapter 1 Welcome

---

Congratulations on your purchase of a BlueView 2D Miniature Multibeam Imaging Sonar system. This manual covers operations of the P-Series sonar systems.

BlueView 2D imaging sonar provides streaming sonar imagery, making it easy to search and navigate in low and zero visibility water. BlueView has coupled high-performance imaging capability with a powerful software package creating one of the world's most versatile underwater imaging systems available today.

Advanced sonar technology, rugged design, and powerful software are just a few highlights of your sonar system. This manual explains imaging sonar interpretation and provides instructions on the installation and operation of your sonar system. For detailed information on using the sonar imaging software, please see the ProViewer Software Handbook found both on the software CD as well as under the software's help menu.

## **About the BlueView Sonar**

Your sonar is a general-purpose underwater imaging sonar designed for ROV, AUV, vessel mounted, and stationary tripod integration. With its Ethernet interface and user-friendly software, the sonar system is designed to be just as easy to use as it is functional.

## Chapter 2 System Contents

---

All BlueView P-Series sonar systems come with the sonar head and an accessory kit. The accessory kit should include the following:

Power-Over-Ethernet (POE) Box
Sonar to Surface Cable (25 ft.)
Impulse MKS-310-CCP-RA Cable Whip (4 ft.)
Ethernet Cable (7 ft.)
ProViewer CD
Quickstart Guide
User Handbook
Rugged Carry Case

## Chapter 3 Understanding Imaging Sonar

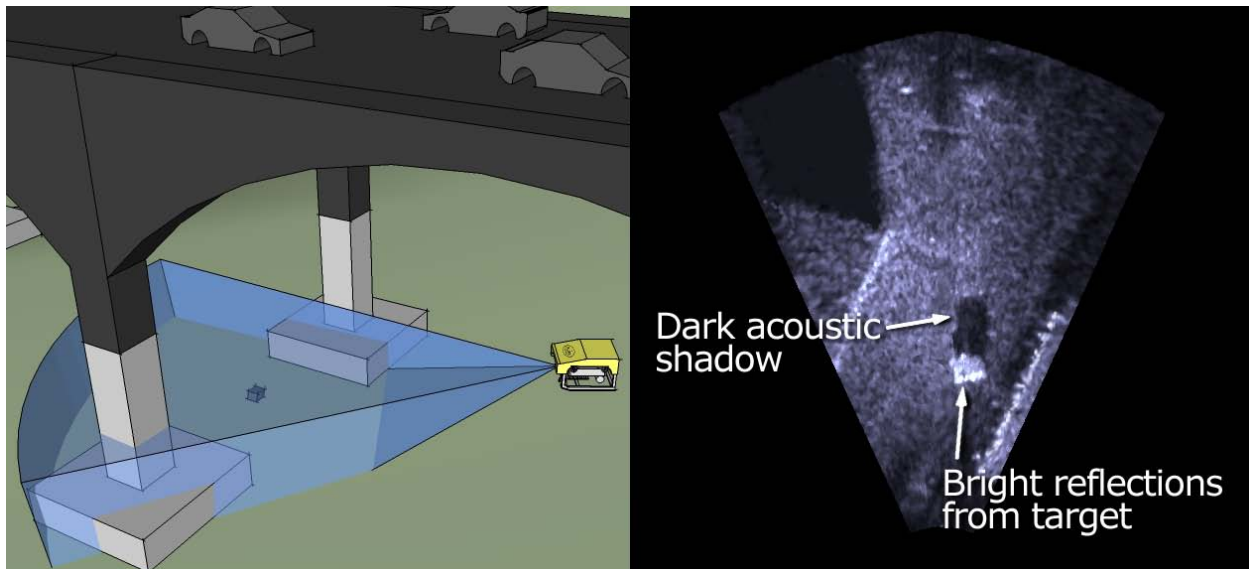
---

### What is Imaging Sonar?

Many people are familiar with scanning type sonar, which employ mechanical rotation of a single acoustic beam over an imaging area. This works well when used on stationary platforms and/or when imaging static targets. They become much less useful when working from a moving platform and/or trying to image moving targets since any motion can cause errors in the final image. By comparison, BlueView imaging sonar are multi-beam sensors, which form many small acoustic beams at once. This allows them to work well from stationary and moving platforms. An imaging sonar can produce several high-quality images per second, making it possible to get movie-like imagery from the sonar.

### How do I interpret the Sonar images?

Imagine a flashlight lying on a table and an object such as a coffee cup located in front of the flashlight. If you look down on this scene, you will see a bright area where light is reflecting off the face of the coffee cup. You will also see a dark shadow behind the coffee cup where light is unable to reach. The same idea can be applied to a BlueView imaging sonar by replacing the light source with a sound source. Bright areas on the sonar image are the result of objects reflecting sound, while dark areas are acoustic shadows resulting from an object blocking the sound. The two figures below provide an example of how a given scene would appear when viewed visually and with high-definition imaging sonar:



# Chapter 4 Sonar System Installation

---

The following chapter contains step by step instructions for setting up your BlueView sonar. For more information on the specifics of operating the sonar, see the ProViewer Software Handbook found both on the software CD as well as under the software's help menu for more information about your ProViewer Software.

## Install Software on your PC

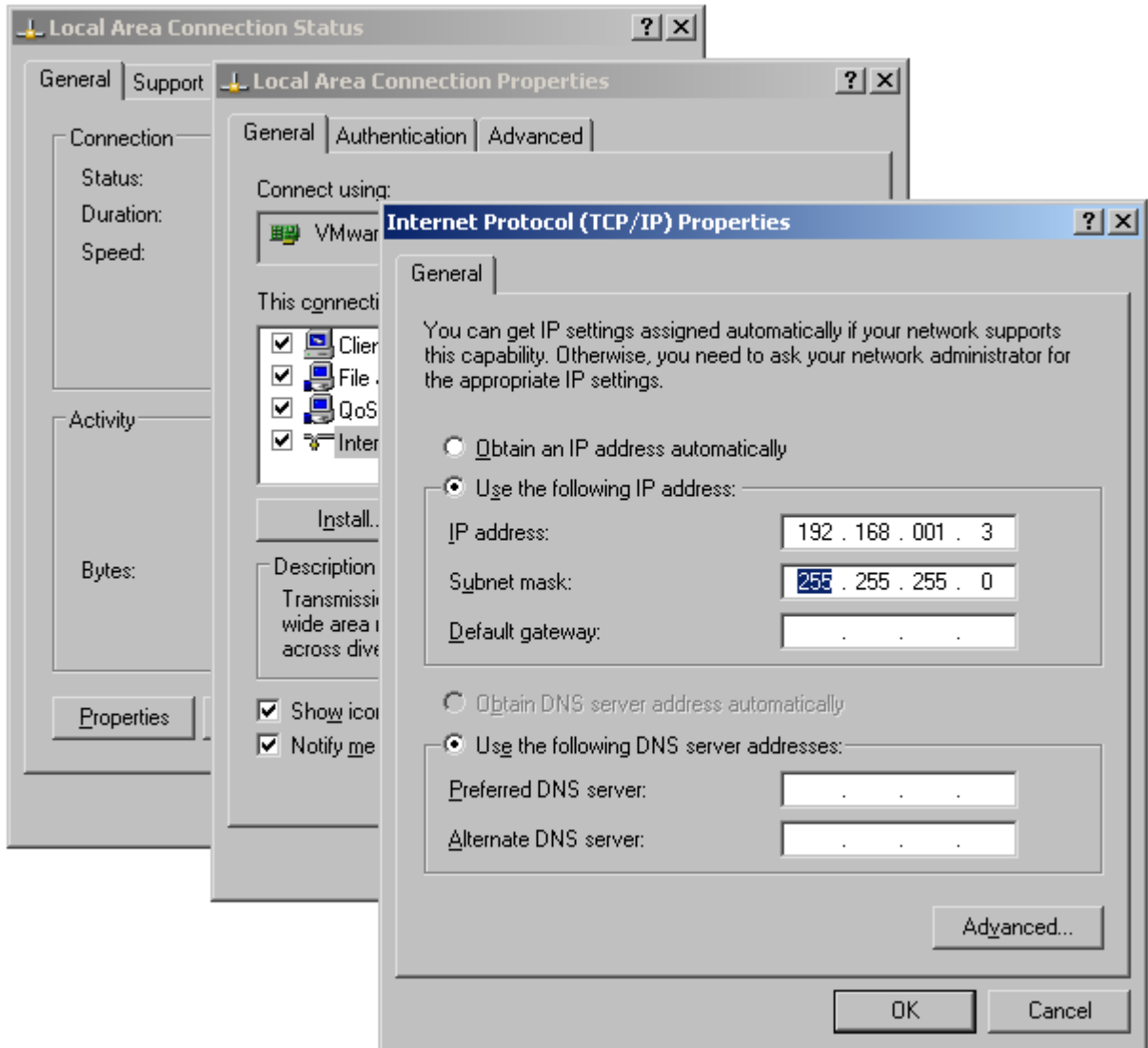
To install ProViewer, just insert the ProViewer CD into your computer's CD-ROM drive. You may also launch the installation by double clicking on setup.exe in the CD's root directory. Follow the instructions to complete the installation.

If you have a personal firewall enabled you may receive a warning message saying that ProViewer is attempting to send information to the Internet. These messages are caused by ProViewer looking for BlueView sonar on your network. BlueView recommends that you select the option that will always allow ProViewer to access the network. For example, in the image below, click Unblock.



## Set your PC's network card IP address

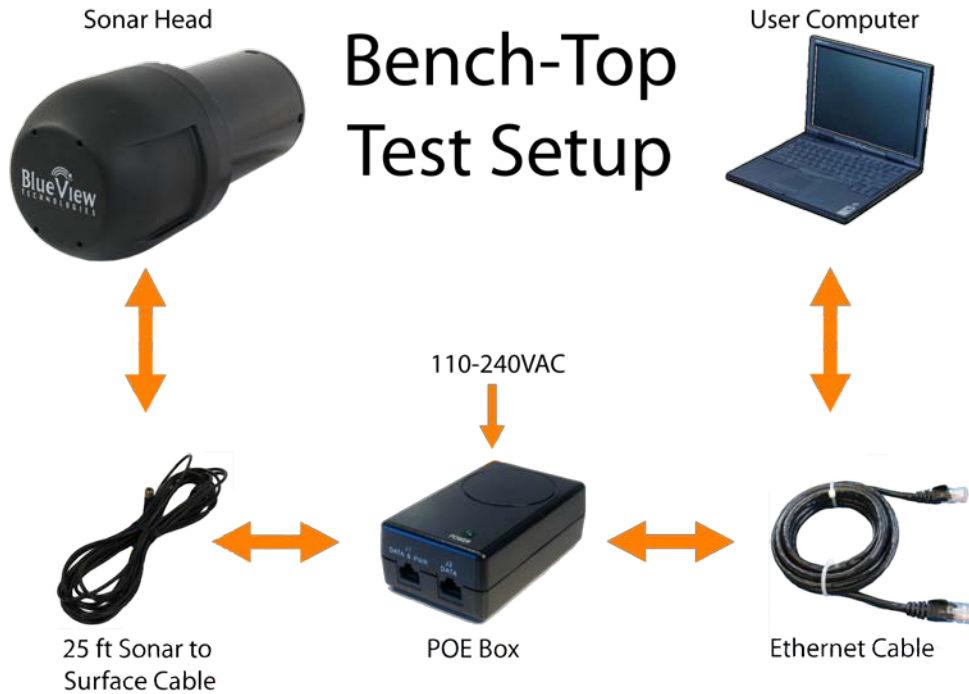
In Windows, open the 'Control Panel'. In the control panel, open the 'Network connections' folder. In 'Network connections' folder, select the interface you'll be attaching the sonar to. This interface is commonly called 'Local Area Connection', but might have another name in your particular application. In the 'Local Area Connection' window, select 'Properties'. In the 'Properties' window, select 'Internet Protocol' and click on the 'Properties' button. In the resultant 'Internet Protocol (TCP/IP) Properties' window, configure it as shown below:



After you've set the IP address and Subnet mask as shown, close all the windows you just opened.

## Assemble System

After installing the PC software found on the included CD, the sonar system can be connected for a bench-top test. The standard sonar package comes with everything needed to get up and running quickly. The only additional item required is an AC power source (your typical wall plug). The figure below depicts how the components are interconnected. Your sonar may look different than the one depicted below.



### Required Cables:



AC Power Cable




25ft Sonar to Surface Cable



Standard Ethernet Cable

***The following are the recommended installation procedures for the Sonar system.***

1. Inspect all cable connector contacts for lack of moisture, corrosion, or damage before assembling the system.
  2. Connect the 10 pin underwater connector on the "25ft Sonar to Surface Test Cable" to the mating bulkhead connector on the rear of the sonar head. Make sure that all o-rings are present and in good shape before making the connection. Once connected, ensure that the connector is fully engaged and tightened.
  3. Connect the RJ45 connector on the Sonar to Surface Test Cable to the "**SONAR J1**" port on the POE Box.
  4. Connect one end of the Standard Ethernet Cable to the "**PC J2**" port on the POE Box.
  5. Connect the other end of the Standard Ethernet Cable to the Ethernet port on the User computer.
  6. Plug the POE box power cable into a standard 120 VAC wall outlet. The sonar head will power up and initialize itself in approximately 40 seconds.
- Note:** When power cycling, correct operation requires that power be cycled from the AC side of the POE box. If you cycle the power off briefly, make sure you leave the power unplugged for at least 10 seconds.
7. Turn on your computer.
  8. Start ProViewer, and click the "Connect" button. 

If ProViewer is able to connect to the sonar, the bench top test is successful. If not, refer to Chapter 7, "Troubleshooting."

## **Firewall Configuration**

ProViewer Software communicates with the sonar head using standard networking protocols. If your PC has firewall software, you may see a warning 'popup' that asks permission to allow the ProViewer Software to connect to the sonar. In that case, you may need to configure your PC's firewall to allow communications between your sonar and your PC using TCP and UDP on port 1149. Refer to your anti-virus/firewall software vendor or your computer tech support resources for assistance with your anti-virus/firewall software.

# Chapter 5 Sonar Installation

---

## Mount the Sonar

After installing your software and running your sonar for the first time, you're ready to put the sonar into the water.

## Mounting Method

In order to do this, the sonar needs a mounting structure to hold it securely in its underwater environment. This mount can either be one purchased from BlueView, or a customer supplied mount. The preferred mounting method is a clamp type fixture around the cylindrical portion of the unit. For custom mounts, refer to the technical drawings provided in the appendix of this manual for sonar dimensions.

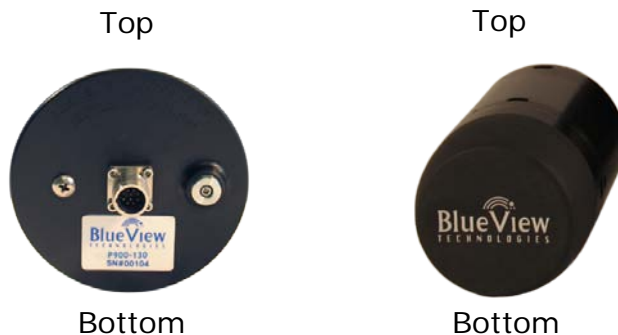
## Mounting Location

The sonar images like a camera out of the front of the nose cone. It should be mounted looking forward, preferably on the same pan-and-tilt as the ROV's main camera.



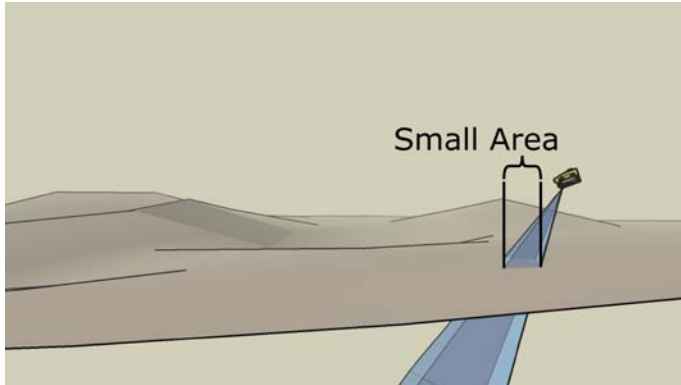
## Sonar Up-Down Orientation

Use the stickers and connector placement on the rear end cap, or the BlueView Logo on the front of the sonar to determine the up-down orientation of the sonar.

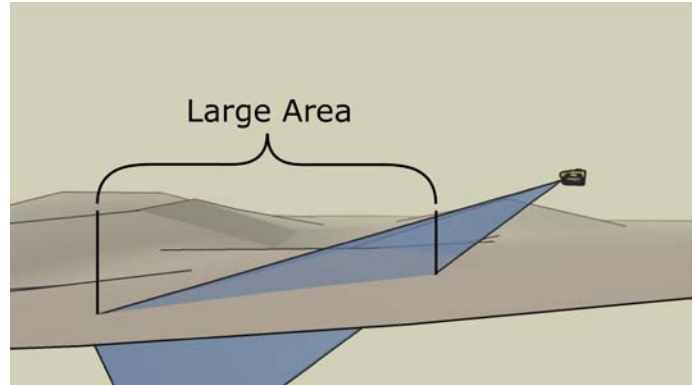


## Sonar Angle

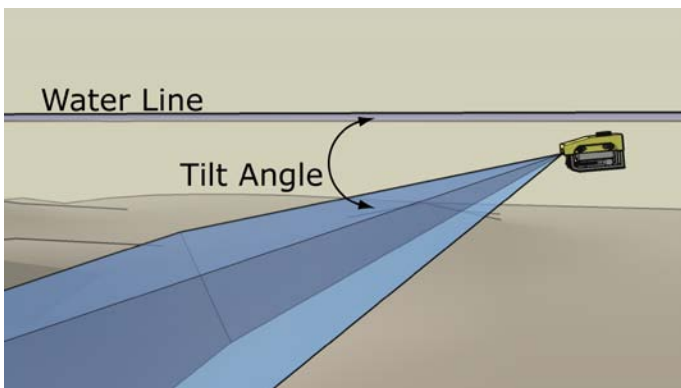
To achieve optimal performance while imaging targets and/or the bottom at a given depth, the angle that the sonar is tilted down from the surface is important. This issue is demonstrated in the figures below. On the left, the sonar is tilted down at a steep angle that provides only a narrow field of view of the bottom. The sonar on the right-hand figure is set at a much shallower angle that provides both a better perspective on targets and a larger field-of-view of the bottom.



The sonar's steep tilt-angle in this figure produces imagery of a narrow strip of the bottom.



The sonar's shallow tilt-angle in this figure produces an image of the bottom over a broad area. In general, shallower tilt-angles, which give larger areas of bottom imaging, are preferred.



Recommended tilt angles.

Target Depth (ft)	0	10	20	30	40	60	80
Approx. Tilt Angle(Deg)	0	3	8	10	10	15	20

# Integrate Sonar through ROV System

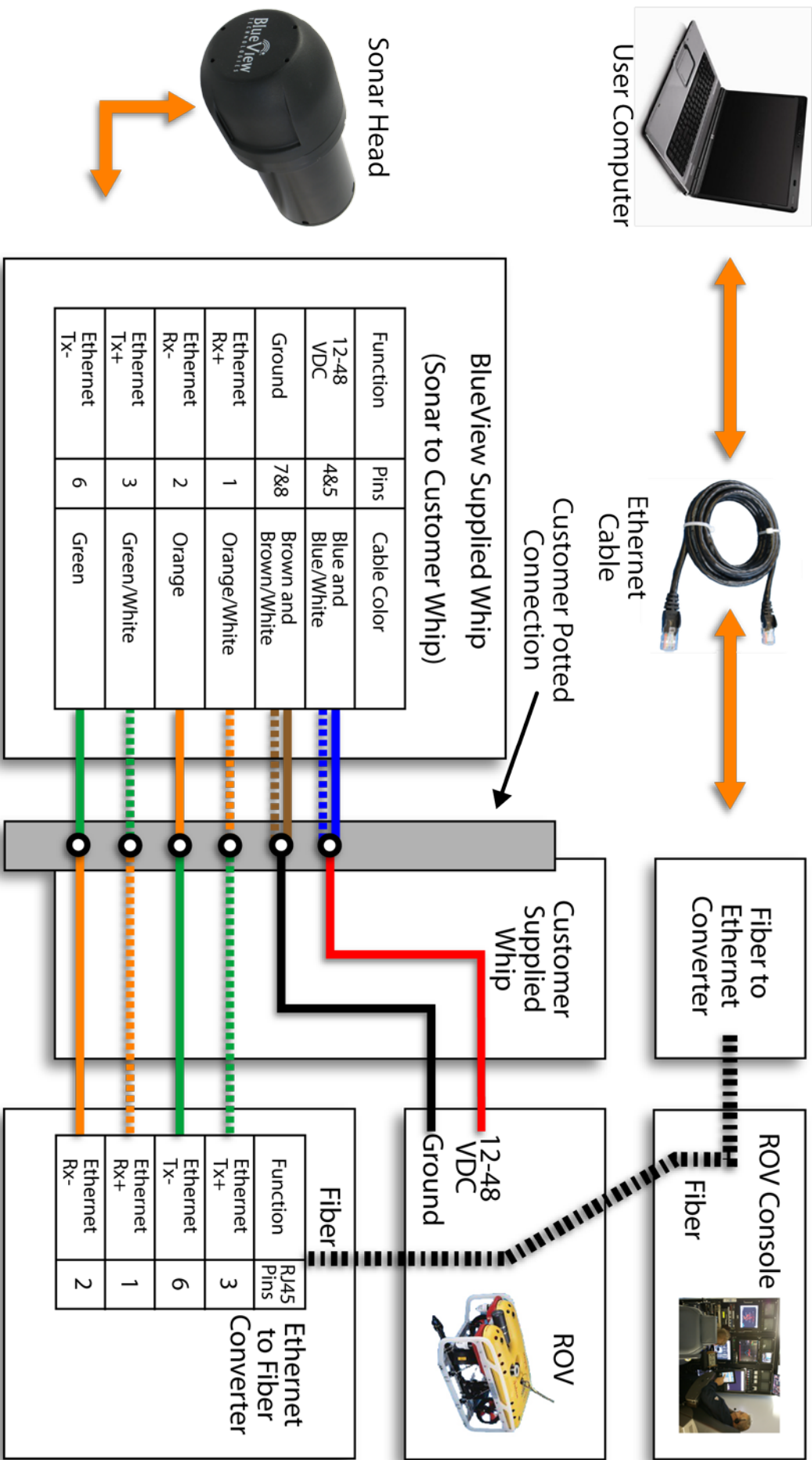


Figure shows typical sonar/ROV integration into fiber based ROV system.

### ***Wiring the Cable Whip***

Wire the cable whip to your ROV accessory whip per the table below.

<b>Function</b>	<b>Impulse Pin Number</b>	<b>Conductor Color</b>
Ethernet RX+	1	Orange/White
Ethernet RX-	2	Orange
Ethernet TX+	3	Green/White
12–48 VDC	4 & 5	Blue
		Blue/White
Ethernet TX-	6	Green
GROUND	7 & 8	Brown
		Brown/White

### ***Test the System***

- Apply power to the system
- Start ProViewer software
- Once the sonar is fully powered up (approximately 45 seconds) click the connect button

### ***Precautions***

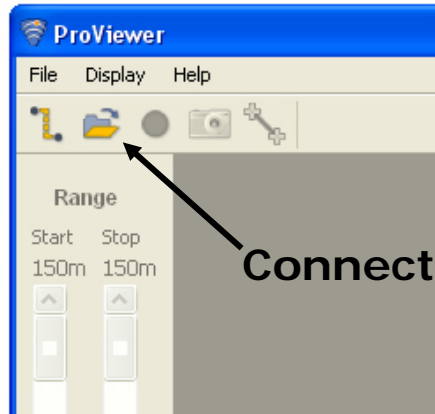
- When power cycling the sonar, be sure to allow at least 10 seconds of 'off time' before turning the sonar back on.
- If your network configuration requires a different sonar IP address than the factory default, you can change it within the ProViewer application. If you decide to do that, you must change your PC's IP address and net mask to compatible settings. Refer to the ProViewer software manual included in your ProViewer CD for more information about sonar IP addressing.

# Chapter 6 Sonar Operation

---

## Connect to the Sonar

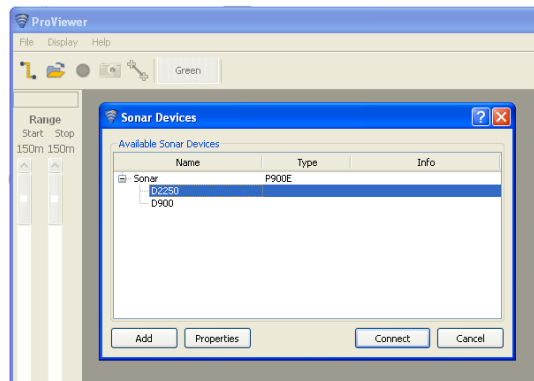
Once you've verified your computer is correctly configured and your hardware components are connected, start the ProViewer software and click the 'connect' icon.



The ProViewer software should connect to the sonar head. If ProViewer can not connect to the sonar, see the trouble shooting section of this handbook.

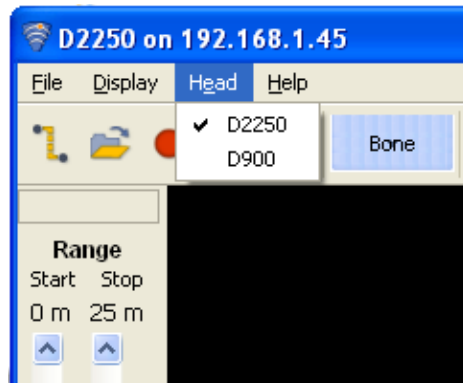
## Dual Frequency Sonars

Some BlueView products operate at more than one center frequency. Those sonars are called 'multi-head' sonars. When connecting to a multi-head sonar, the 'Sonar Devices' window will show you all the sonar heads available to connect to:



Simply double-click the head you want to use, or select the head and click the 'connect' button.

If already connected to a sonar head, you can switch which head you are using with the 'Head' drop-down menu:



**NOTE:** To view multiple sonar heads at once, open two instances of ProViewer and connect each to a different head.

## Shutdown

To shutdown the sonar, close the "Sonar Window" by clicking on the "X" icon in the top right-hand corner of the window, or select **Exit** from the **File** menu to close the entire program. It is now safe to power down the sonar or disconnect the Ethernet cable from the computer.

## Maintenance

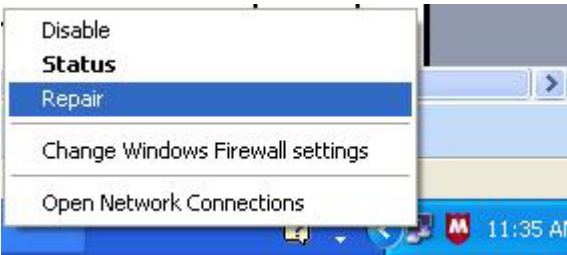
To ensure continued good operation of your sonar system, follow these practices:

1. After use in salt water, rinse the sonar head and connectors off with fresh water, blow connector contacts clean and coat lightly with dielectric grease.
2. Before use, ensure connector contacts are clear of dirt and corrosion and protected with dielectric grease.

# Chapter 7 Troubleshooting

---

## If the ProViewer Software cannot see the sonar head:

Possible Cause	Possible Solution
No Power	Confirm that the ProViewerE Junction (POE) Box is plugged into a standard 120VAC outlet and that the small green LED on the POE Box is glowing. Also check that the Sonar-to-Surface cable is plugged into the " <b>SONAR J1</b> " port on the POE Box.
Improperly connected	In addition to the connections described above, verify that you have a good cable between the computer Ethernet port and the " <b>PC J2</b> " port on the POE Box.
Bad State	Reset the sonar by removing the POE box AC power cord for 10 seconds. The sonar head takes 40 seconds to reboot after power is re-applied.
Dirty connectors	Make sure that all connector pins are clean and corrosion free.
Improper Ethernet cable	<p>The sonar head cabling is conveniently designed so that you can connect your POE Box to a PC with a <b>standard</b> Ethernet cable.</p> <p>The price for this convenience is paid when connecting your POE Box to a network hub. In this case, you will need to use a 'crossover' Ethernet cable <b>unless</b> your network hardware is capable automatically handling 'crossed' Ethernet cables.</p>
PC networking software is confused	<p>Sometimes the PC 'arp' table is corrupted and requires repair. There are several ways to do this, depending on your particular OS. On Windows you can: repair the arp table via the desktop notification area icon:</p>  <p>The screenshot shows a Windows desktop notification area icon for network status. A context menu is open, listing several options: 'Disable Status', 'Repair' (highlighted in blue), 'Change Windows Firewall settings', and 'Open Network Connections'. The background shows a portion of the Windows taskbar with the time 11:35 AM.</p>

	<p>You can also simply restart the computer. Depending on your particular situation, it may also be helpful to cycle the power on the sonar. In this case, be sure to leave the sonar power disconnected for a full 10 seconds before restoring power.</p>
<p>IP subnet masks don't match</p>	<p>Make sure the subnet mask is <b>the same</b> on both PC and sonar. For the factory default 'Class C network' configuration, the subnet mask is 255.255.255.0. The '255' part of the mask defines the '<b>network</b>' part of the IP address. The '0' part of the mask defines the '<b>device</b>' part of the IP address.</p>
<p>IP network addresses don't match.</p>	<p>Make sure the IP <b>*network*</b> part of the IP address is <b>the same</b> on both the sonar and the computer. In the factory default case, this is the first 3 numbers in the IP address: 192.168.1.</p>
<p>IP network device addresses are the same.</p>	<p>The <b>device</b> part of the IP address must be <b>*different*</b> for every device on the network. In the factory default case, the sonar is set to 45 and the PC is set to 3. Don't use 255, it's reserved for 'broadcast' use.</p>
<p>Poor connection quality</p>	<p>Use an ohm meter to verify <b>Tx</b> and <b>Rx</b> line connectivity between the Ethernet connector that plugs into the PC and the 10 pin connector that plugs into the sonar head. Refer to "ProViewerE Sonar to Surface Cable Drawing" in the Appendix for pin to pin connection information.</p>
<p>You suspect you've mis-configured the sonar IP address</p>	<p>To connect with the sonar, its IP address must be compatible with the network or computer to which it is attached. If you mis-configure the sonar's network settings and are unable to connect to it, follow this procedure to reestablish communications with the sonar:</p> <ol style="list-style-type: none"> <li>1. Connect the sonar communication cable directly to a Windows XP computers network interface card.</li> <li>2. As described below in the 'Running the sonar on a network' section, open the 'Internet Protocol (TCP/IP) Properties window for the network interface card you plugged the sonar into.</li> <li>3. Under the 'General' tab, select 'Obtain an IP address automatically'.</li> <li>4. Under the 'Alternate Configuration' tab, select 'Automatic private IP address' and click OK.</li> </ol>

	<ol style="list-style-type: none"> <li>5. Close the rest of the Windows folders you opened.</li> <li>6. Cycle the sonar power off (for at least 10 seconds), then turn the sonar back on.</li> <li>7. After about 100 seconds, the Windows PC and the sonar should have negotiated 'link local' IP address (in the range of 169.254/16).</li> <li>8. Using the ProViewer software, 'connect' normally and reconfigure the sonar's network settings to be compatible with its intended network.</li> </ol>
--	---

**If the image updates seem slow:**

<b>Possible Cause</b>	<b>Possible Solution</b>
Ethernet congestion	Shut down other computers or services that are consuming the Ethernet network bandwidth. The sonar requires about 10MBps of network bandwidth to operate.
Range settings	When your sonar 'pings', it has to wait for the echo to return from a distant object; long 'range' settings directly cause slow updates. Reduce the 'Range Stop' distance to increase the update rate.
GUI window size	The larger the displayed sonar image is, the longer it takes for the ProViewer software to construct the image. To increase the image display update rate, decrease the size of the sonar image display window by grabbing one of sides or corner of the GUI and dragging it towards the center of the GUI window.

**Still not working?**

**Please contact us:**

**BlueView Technologies Customer Support**

**[www.blueviewtech.com](http://www.blueviewtech.com)**

**206-545-7260**

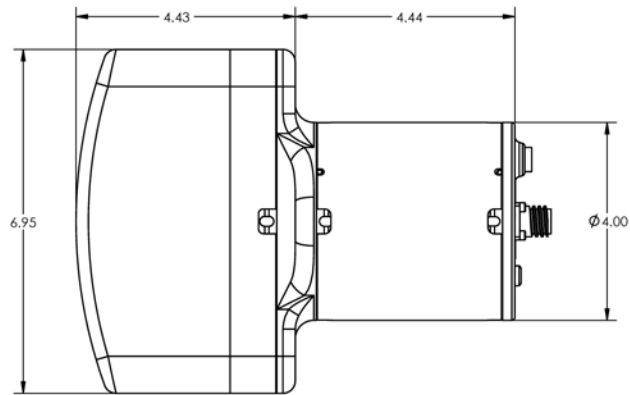
**8am – 5pm PST Mon through Fri**

# Appendix A: Technical Specifications

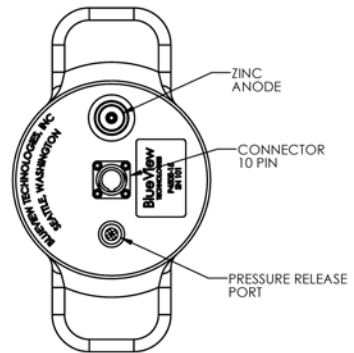
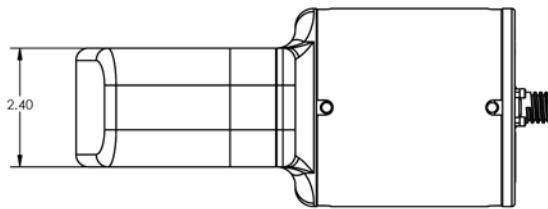
	P450-45	P900-45	P900-90	P900-130	P900/2250-45
Sonar					
Field-of-View	45°	45°	90°	130°	45°
Max. Range	137m (450 ft.)	55m (180 ft.)	100m (328 ft.)	100m (328 ft.)	55m (180 ft.)
Beam Width	1° x 15°	1° x 20°	1° x 20°	1° x 20°	1° x 20°
Number of Beams	256	256	512	768	256
Beam Spacing	0.18°	0.18°	0.18°	0.18°	0.18°
Range Resolution	2 in.	1 in.	1 in.	1 in.	1 in. & 0.4 in.
Update Rate	Up To 10 Hz	Up To 15 Hz	Up To 15 Hz	Up To 15 Hz	Up to 15 Hz
Frequency	450 kHz	900 kHz	900 kHz	900 kHz	900 kHz & 2.25 MHz
Mechanical					
Weight in Air	5.7 lb	4.1 lb	5.5 lb	5.5 lb	6.0 lb
Weight in Water	1.4 lb	1.0 lb	1.4 lb	1.4 lb	1.5 lb
Depth Rating	300m	1,000m	1,000m	1,000m	300m
Size*	8.9 in. x 7.0 in.	7in. x 4in.	11.3 in. x 5 in.	11.3 in. x 5 in.	8.3 in. x 5.0 in.

\*See Outline Drawings  
for Exact Dimensions.

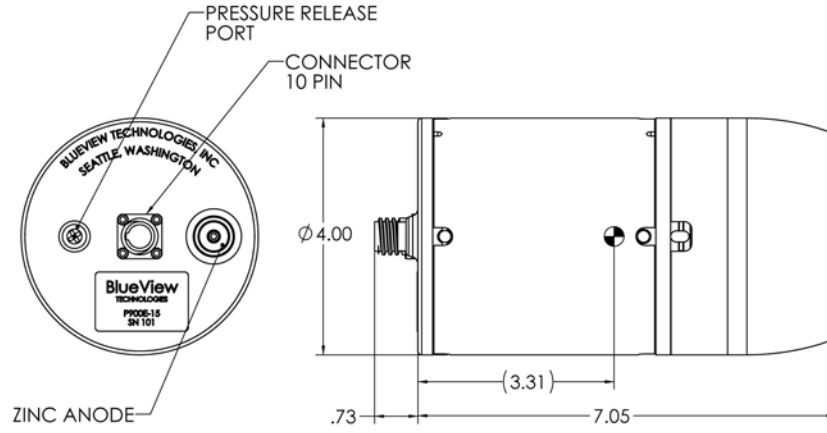
# P450-45 Outline Drawing



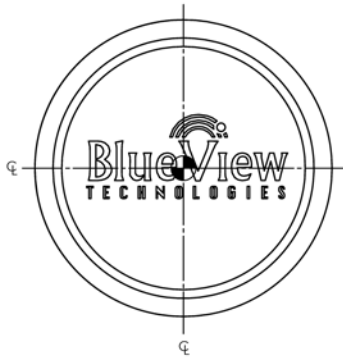
Units = Inches



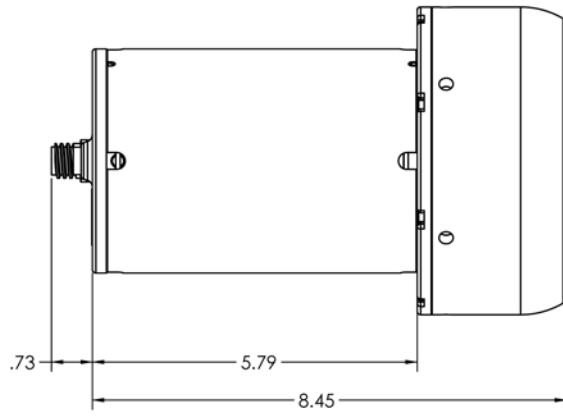
# P900-45 Outline Drawing



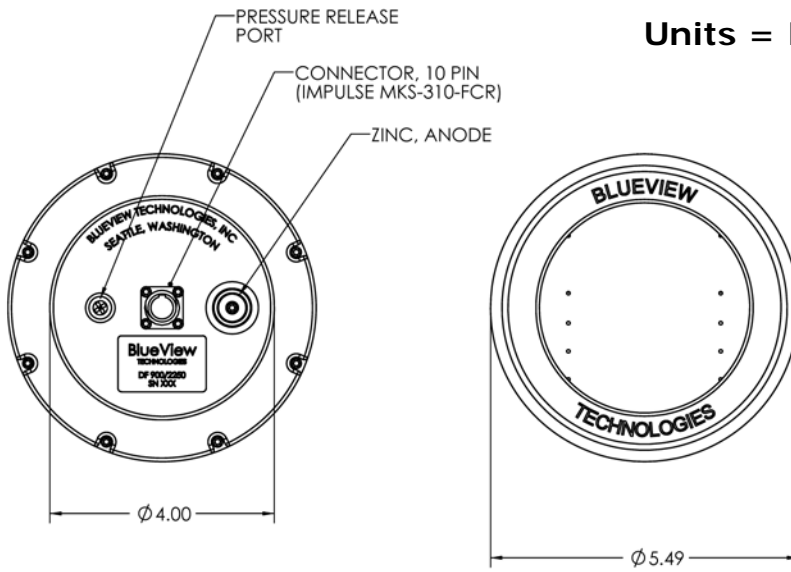
Units = Inches



# P900/2250-45 Outline Drawing



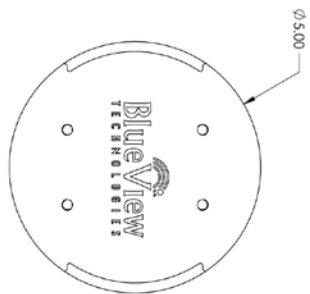
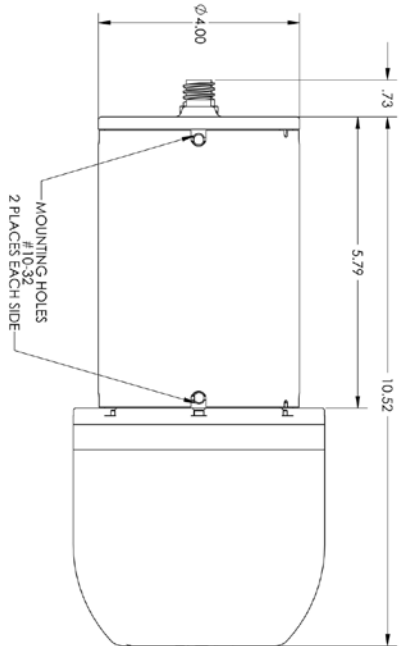
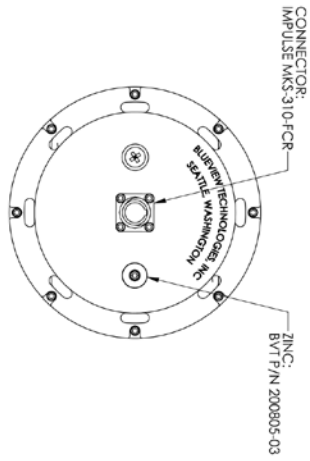
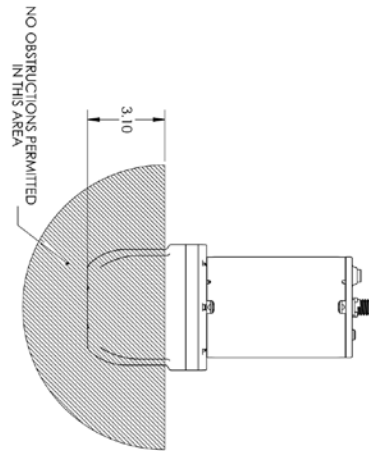
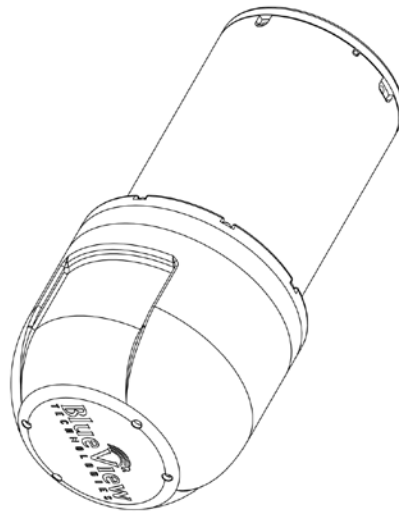
Units = Inches



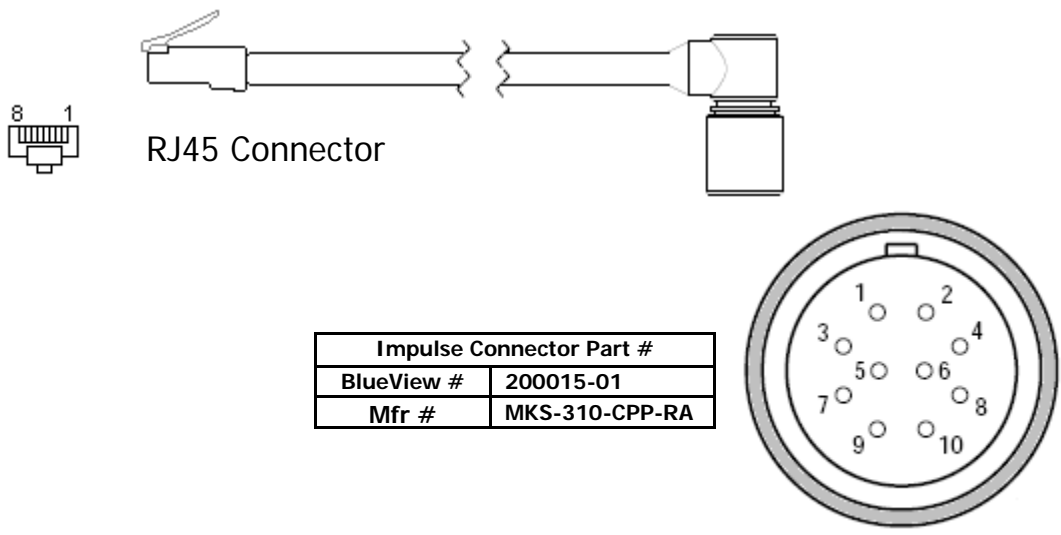
# P900-90 & P900-130 Outline

NOTES: UNLESS OTHERWISE SPECIFIED

1. DIMENSIONS ARE IN INCHES.



## Cable and Whip Pin Out Diagram



INTERCONNECTION TABLE			
RJ45	CONDUCTOR COLOR	PROVIEWER-E FUNCTION	IMPULSE
1	ORANGE/WHITE	Rx+	1
2	ORANGE	Rx-	2
3	GREEN/WHITE	Tx+	3
4	BLUE	12-48V	4
5	BLUE/WHITE	12-48V	5
6	GREEN	Tx-	6
7	BROWN/WHITE	DC Return	7
8	BROWN	DC Return	8

The Tx/Rx lines are placed to be directly connected to a PC without a 'crossover' cable. Supply power to pins 4,5 and 7,8 as shown above.