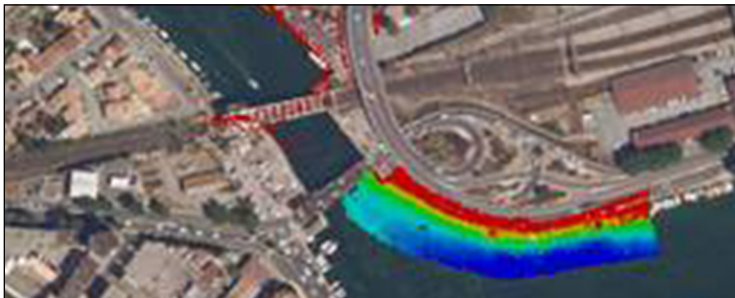


# Bauland, France - Creating New Business Opportunities By Expanding Underwater Services

## The Situation

Bauland-TP, a leading engineering services company in France provides its clients with a wide variety of services, including inspection and monitoring of critical underwater structures and areas. Typical underwater worksites include dams, conveyance tunnels, waterways, and harbors where traditional underwater inspection equipment is

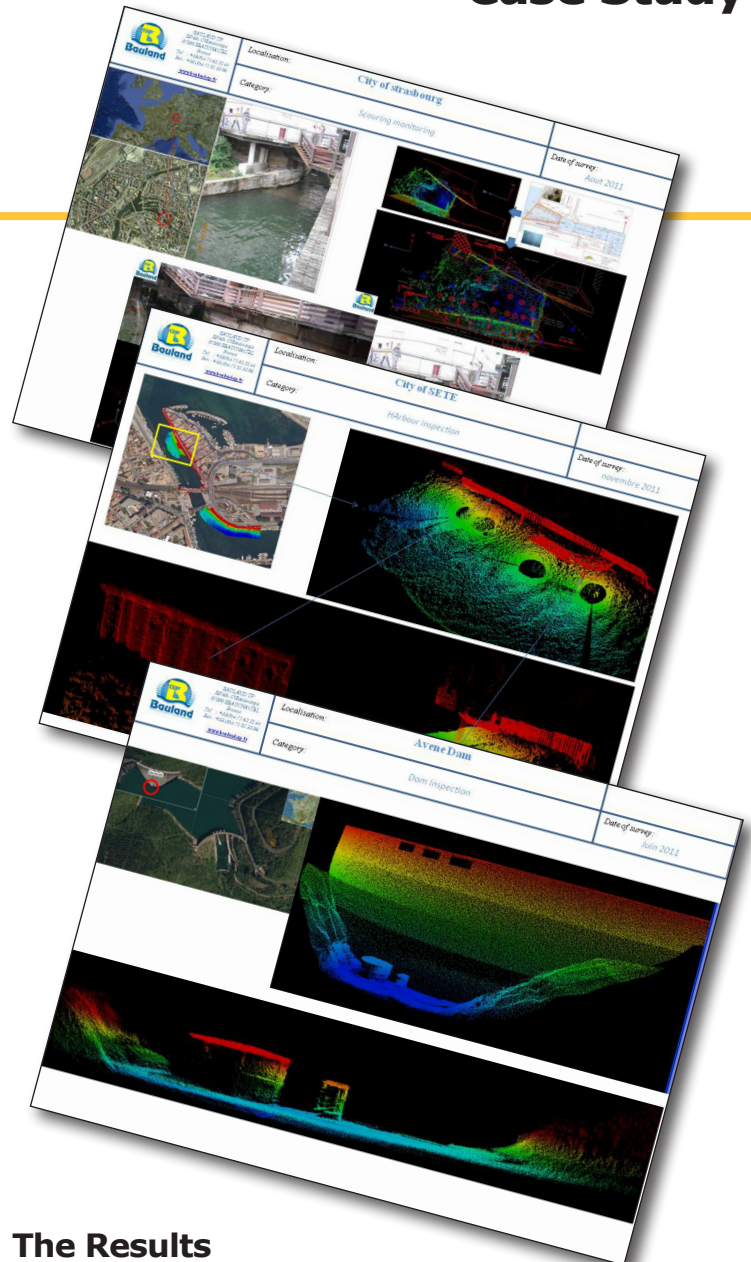


less than effective due to water clarity levels, access limitations, and intrusion of surrounding structures. Further, traditional underwater inspection equipment does not provide the proper viewing angles to enable accurate inspections, Bauland-TP sought new technology solutions that would:

- 1) Enable a wide variety of detailed, accurate underwater inspections in adverse conditions
- 2) Open new business opportunities by expanding their current service offerings
- 3) Provide customers with unmatched results and stay a step ahead of the competition

## The Solution

Discovering Bauland's need for a versatile, accurate inspection system ECO-Line France, a leading distributor of underwater devices for professional and recreational proposed the BlueView BV5000-1350 3D Mechanical Scanner as the perfect solution. Bauland engineers and surveyors found the compact size, deployment ease, and straight-forward operation of BlueView's high-resolution acoustic scanner compelling, and the industrial-grade acoustic technology made the system impervious to harsh, turbid environments. Further, the "eye-level" perspective captured by the BV5000 provided the unique, distinctive profile data the engineers sought for Bauland's clients.



## The Results

The imagery above shows a wide variety of projects where Bauland has used the BV5000 system for inspection and monitoring applications. The compact, lightweight BV5000 transported seamlessly from one project to another - without complicated set-ups or exhaustive configuration requirements. Oliver Samat, Geomatician Ph.D in Geography of Bauland-TP said "The BV5000 has proven to be very well suited for high-resolution 3D surveys and structural inspections in confined places and hard-to-reach underwater areas. The detailed, side elevation profile of underwater structures captured by the BV5000 provides us with the unique data we sought for our clients."

## Contacts

**Olivier Samat**  
Geomatician, PhD in Geography  
ECO-LINE France  
+33 493 341662  
ecoline.france@freesbee.fr  
www.ecolinefrance.com

**Nick Lesnikowski**  
3D Product Manager, Hydrographer  
BlueView Technologies, Inc.  
+1 206 826 5836  
nick.lesnikowski@blueview.com  
www.blueview.com

## About the BlueView BV5000 3D Mechanical Scanner

BlueView uses new high-resolution profiling sonar technology to create an easy-to-use underwater 3D scanner, the BV5000 system. The compact, lightweight BV5000 works much like a topographic laser scanner, and uses high frequency sound beams instead of lasers to create extremely detailed 3D imagery and collect accurate measurement data. Designed for high portability and easy integration, the BV5000 system can be deployed on a tripod, ROV, or fixed mount. Operating from a stationary position, the BV5000 creates full 360° rotational scans. Multiple overlapping scans can be registered with or without navigation data to create mosaic images of large structures or areas.

All BV5000 3D Mechanical Scanning Systems include BlueView's ProScan® software and 3D viewer. The BV5000 data is stored in both raw format for post processing, and a standard .xyz point cloud format for easy import to multiple 3D viewing programs. BlueView is an authorized Leica Geosystems distributor, providing access to its powerful Cyclone software to create 3D mosaic imagery and model standard components for CAD export.



### BV5000-1350

The perfect balance between range and resolution. The BV5000-1350 is specifically designed for imaging complex underwater structures and areas with an operating frequency of 1.35 MHz that enables ranges of 1 – 30 m (3.2 – 98 ft.).

### BV5000-2250

Engineered for ultra-high 3D resolution, the BV5000-2250 delivers unprecedented imagery and detail at close range. The 2.25 MHz operating frequency enables ultra-high resolution 3D scans with ranges of 0.5 – 10 m (1.6 – 32 ft.).



### Typical 3D Mechanical Scanning Applications:

- 3D Site Survey
- 3D Structure Survey
- 3D Structure Inspection
- Structure Decommissioning
- Bridge Inspections
- Dam Inspections
- Seawall and Pier Inspections
- Condition Monitoring
- Scour and Erosion Monitoring
- Spool Piece Metrology
- Archeological Site/Structure Mapping
- Ship Hull Inspections and Mapping



The BlueView BV5000 can be integrated onto any work-class or mid-size inspection class ROV to enable easy 3D scanning of complex structures and areas, even in deepwater (up to 4,000 meters) environments. Combine the BV5000 with an ROV to collect 3D data from unique vantage points, providing unmatched visibility into and around the target structure or area.



The highly portable, lightweight BlueView BV5000 is easily lowered into position around complex structures, or in remote, hard-to-reach areas from waterside structures or small surface vessels. When combined with BlueView's lightweight tripod the BV5000 weighs approximately 40 lbs., and is perfectly suited for one-man deployment and operation.

## BlueView Technologies, Inc.

2151 N. Northlake Way, Suite 214  
Seattle, WA 98103 USA  
P +1 (206)545-7260 • F +1 (206)545-7261  
info@blueview.com • www.blueview.com