

2D Forward-Looking Imaging Sonar



The ultimate system for maximum efficiency, especially in low-visibility and zero-visibility conditions. The compact size and ultra-wide field-of-view (FOV = 130°) makes this the most efficient and effective forward-looking imaging sonar system available today. By covering wide areas quickly the P900-130 minimizes the time it takes to complete an inspection or search, saving time and money. The P900-130 can be used as a stand-alone sensor module, or easily integrated on a wide variety of underwater or surface vehicles. Custom integration solutions are also available.

Go to www.BlueView.com/movies to see underwater streaming sonar images captured by the P900-130.

APPLICATIONS

- Hull Inspection - IED Detection.
- Underwater Navigation.
- Search and Recovery.
- Underwater Inspection.
- Low-Visibility Underwater Monitoring.

BENEFITS

- Easy, accurate detection and identification with high-definition imagery.
- Unaffected by motion (up to 7 knots) for effective search and recovery applications.
- Quick and easy integration with a compact, plug & go design.
- Minimal impact on operating systems with low power consumption.

FEATURES

- Streaming video imagery for real-time detection and navigation.
- Tough, dependable design for harsh environments.
- Standard Ethernet interface.
- "Plug & Play" operation.
- Easy-to-use Windows based software.
- Software development kit available.

WORKS FROM BOTH MOVING AND STATIONARY PLATFORMS

- Patrol Boats
- Micro ROVs
- Work Class ROVs
- Diver Hand-Held Systems
- Tripods
- AUVs

Specifications

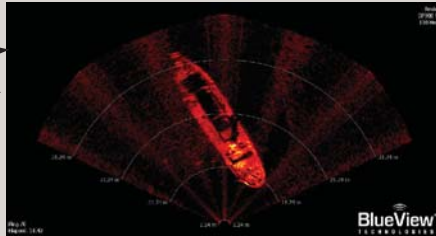
SONAR	INTERFACE	MECHANICAL
<ul style="list-style-type: none"> • Field of View: 130° x 20° • Max Range: 100m (328 ft.) • Beam Width: 1° x 20° • Number of Beams: 768 • Beam Spacing: 0.18° • Range Resolution: 1 in. • Update Rate: Up to 15 Hz • Frequency: 900 kHz 	<ul style="list-style-type: none"> • Coms: Ethernet • Voltage: 12-48 VDC • Power: 15 Watts 	<ul style="list-style-type: none"> • Weight in Air: 5.54 lbs. • Weight in Water: 1.36 lbs. • Depth Rating: 1,000m (3,280 ft.) • Size: 11.3 in x 5 in OD

Real-Time Streaming Video-Like Imagery



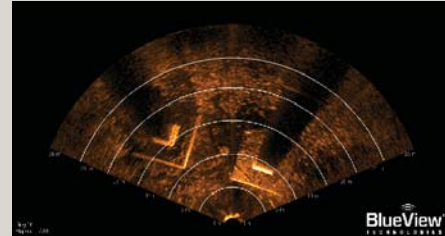
BlueView's P900 Series family of forward-looking imaging sonar solutions use revolutionary technology to provide real-time streaming video-like imagery from stationary or moving platforms, making your underwater vision easy, even in low and zero visibility conditions.

Bottom Searches



Quickly locate and navigate to objects, even in low visibility conditions. The above sonar image shows a submerged boat located during surface-based search operation.

Underwater Inspection



This image shows two bridge footers at close range. The structure and features of the bridge footers are clearly visible even in the murkiest conditions.

SOFTWARE OPTIONS

The P900-130 sonar is delivered with BlueView Technologies ProViewer™ Software that can be installed on to any PC with a Windows® based operating system enabling immediate out-of-the-box operation.

PROVIEWER™ SOFTWARE FEATURES

- **Simple and Intuitive Interface** - The clean, well-designed graphical user interface allows data collection right out-of-the-box. Recorded files are just as accessible as live data, allowing the same range of measurement and data export.
- **On-The-Fly Measurements** - Make real-time measurements of objects and determine range and bearing, while the system is in operation and during post analysis of stored data, for fast, easy surveys and to aid navigation.
- **Video Synchronization** - Easily connect a visible-light camera feed into ProViewer™ to record time synchronized sonar and video images, and to simultaneously view sonar and video images on-screen in real-time to enhance underwater viewing capabilities.
- **Georeferencing** - Accepts industry standard NMEA input for GPS position, heading and depth, from common GPS devices, compasses and depth sensors. Displays the information on screen and saves to file with sonar data for later display and analysis.
- **Movie Exports** - Quick, simple data review controls enable easy export of streaming sonar video-like footage to enhance reports, presentations and e-mail messages.
- **Integrated Pan & Tilt Control** - Allows calibration and full control of ROS Pan & Tilt for boat mounted or stationary sonar installations.

OPTIONAL SOFTWARE DEVELOPMENT KIT

BlueView Technologies makes integration into complex and/or unique underwater inspection, detection, identification, and survey platforms easy with its advanced Software Development Kit (SDK). BlueView Technologies' SDK has been successfully used to enable real-time vehicle contact, obstacle avoidance, homing and dynamic positioning. The kit is a comprehensive library of C and C++ routines and functions that enable:

- Access to live sonar or stored data files
- Storage and retrieval of sonar and navigation data
- Data mapping to create 2D color images
- Setting of minimum and maximum data collection ranges
- Control of ping rate

OPTIONAL ETHERNET EXTENDER KIT

Enables the sonar to transmit data over 2,000+ feet over a single twisted pair.



- 3 Watts @ 12-48 VDC
- Depth Rating: 1000 ft
- Size: 6.0 in x 4.0 in OD
- 6 Mbps

